

**Anti-Human IgM (Fc5 $\mu$ ) Secondary Antibody**  
**Mouse Monoclonal 22G1.H8 IgG2b kappa , Unconjugated**  
**Catalog # ASR2311****Specification**

---

**Anti-Human IgM (Fc5 $\mu$ ) Secondary Antibody - Product Information**

Description	<b>Anti-HUMAN IgM (Fc5 <math>\mu</math>) (MOUSE) Antibody</b>
Host	<b>Mouse</b>
Conjugate	<b>Unconjugated</b>
Target Species	<b>Human</b>
Reactivity	<b>Human</b>
Clonality	<b>Monoclonal</b>
Application	<b>WB, E</b>
Application Note	<b>ELISA 1:1000-1:10000;Western Blot 1:1000-1:2000</b>
Physical State	<b>Liquid (sterile filtered)</b>
Host Isotype	<b>IgG2b</b>
Target Isotype	<b>IgM Fc5 <math>\mu</math></b>
Buffer	<b>0.02 M Potassium Phosphate, 0.15 M Sodium Chloride, pH 7.2</b>
Immunogen	<b>Anti-Human IgM Fc5 <math>\mu</math> was produced by repeated immunization with Human IgM Fc5 <math>\mu</math> fragment in mice.</b>
Stabilizer	<b>None</b>
Preservative	<b>0.01% (w/v) Sodium Azide</b>

**Anti-Human IgM (Fc5 $\mu$ ) Secondary Antibody - Additional Information****Shipping Condition**

Dry Ice

**Purity**

Anti-Human IgM Fc5  $\mu$  Antibody was prepared from concentrated roller bottle supernatant by Protein A chromatography sepharose beads. Assay by immunoelectrophoresis resulted in a single precipitin arc against anti-Mouse Serum, Human IgM, Human Serum and Human Fc5  $\mu$ . No reaction was observed against Human IgG, Human IgA, Human Fc, Human F(ab) or Human F(ab)2.

**Storage Condition**

Store vial at -20° C prior to opening. Aliquot contents and freeze at -20° C or below for extended storage. Avoid cycles of freezing and thawing. Centrifuge product if not completely clear after standing at room temperature. This product is stable for several weeks at 4° C as an undiluted liquid. Dilute only prior to immediate use.

**Precautions Note**

This product is for research use only and is not intended for therapeutic or diagnostic applications.

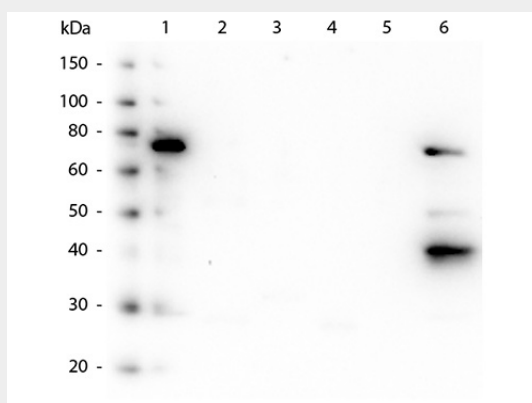
**Anti-Human IgM (Fc5 $\mu$ ) Secondary Antibody - Protein Information**

## Anti-Human IgM (Fc5 $\mu$ ) Secondary Antibody - Protocols

Provided below are standard protocols that you may find useful for product applications.

- [Western Blot](#)
- [Blocking Peptides](#)
- [Dot Blot](#)
- [Immunohistochemistry](#)
- [Immunofluorescence](#)
- [Immunoprecipitation](#)
- [Flow Cytometry](#)
- [Cell Culture](#)

## Anti-Human IgM (Fc5 $\mu$ ) Secondary Antibody - Images



Western Blot of Mouse anti-Human IgM Fc5  $\mu$  antibody. Lane 1: Human IgM. Lane 2: Human IgG. Lane 3: Human Fc. Lane 4: Human F(ab). Lane 5: Human F(ab)<sub>2</sub>. Lane 6: Human IgM Fc5  $\mu$ . Load: 50 ng per lane. Primary antibody: Human IgM Fc5  $\mu$  monoclonal antibody at 1:1000 for overnight at 4 degrees C. Secondary antibody: Peroxidase mouse secondary antibody at 1:40,000 for 30 min at RT. Block: MB-070 for 30 min at RT. Predicated/Observed size: 78 kDa, 78 kDa for Human IgM.

## Anti-Human IgM (Fc5 $\mu$ ) Secondary Antibody - Background

Human IgM Fc5  $\mu$  antibody generated in mice detects specifically human IgM. This anti-human IgM secondary antibody is ideal for investigators who routinely perform titration assays, western-blot, immunoprecipitation and more generally immunoassays.